



zetronic group

CORPORATE PRESENTATION

thanks to **molex**

ABOUT ZETRONIC

Zetronic, founded in 1921, has established itself as a key player in the automotive industry.

Historically active in the telecommunications sector as well, the company has built strong expertise in **integrating mechanics and plastics**.

With **a team of +120 employees**, **Zetronic** stands as an industrial excellence in its field, **specializing in tailor-made products** designed to meet specific client needs.

As of December 27, 2024, with the acquisition by **Innovatek** and **iVision Tech**, **a new era of growth and innovation begins**.

December 27, 2024



Business Area:
EYEWEAR & SMART DEVICES

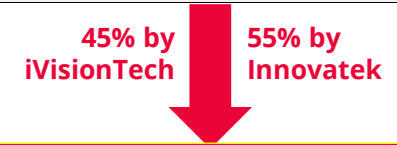
proudly listed in the Euronext
Growth Milan – Ticker: IVN
WWW.IVISIONTECH.EU

+



Business Area:
MECHATRONICS & LABOUR INTENSIVE

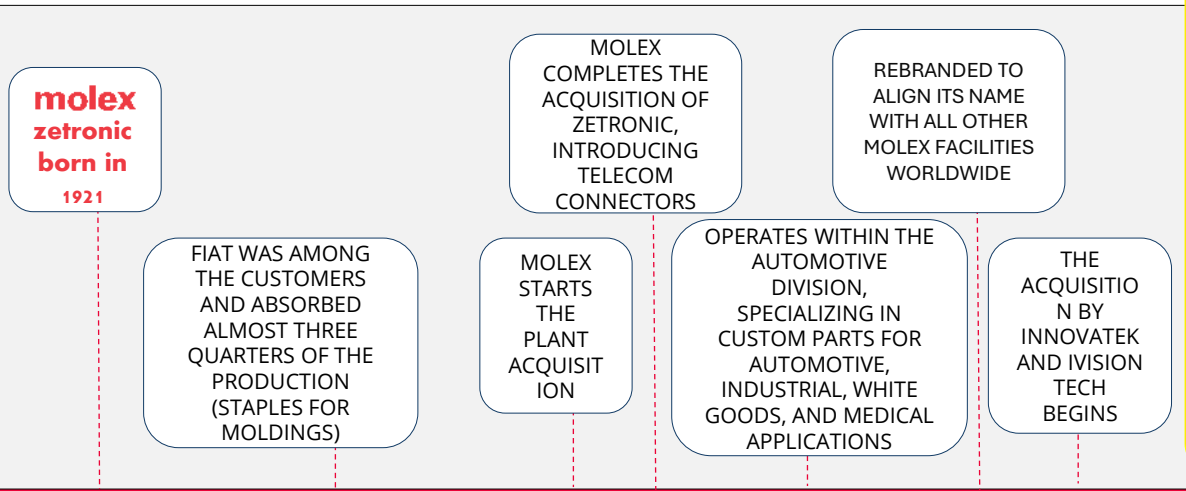
WWW.INNOVATEK-SRL.IT




PADOVA – 18.000 SQM - ZETRONIC PLANT

zetronic

Automotive Supply Excellence

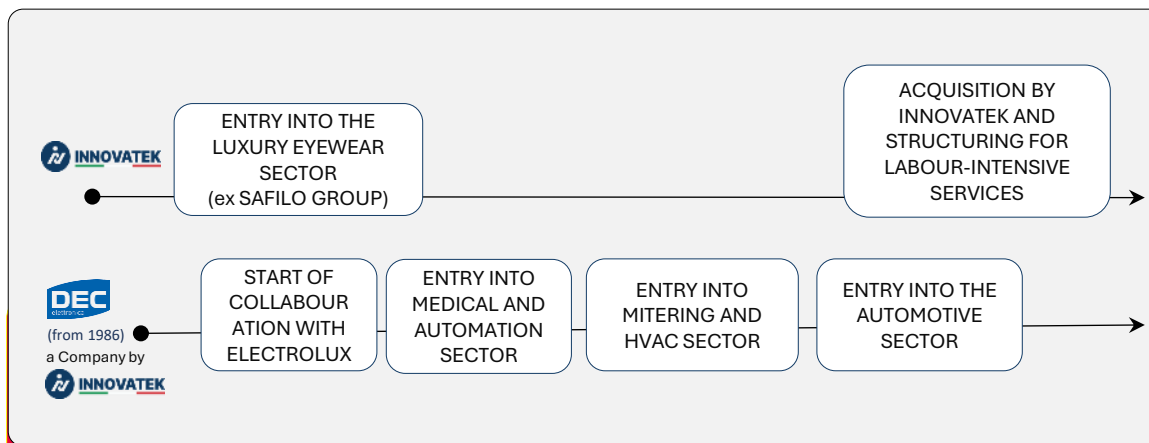


THE GROUP

iVision Tech and **Innovatek** have acquired the historic **Molex Zetronic** of Padova, Italy.

Together with **Innovatek** and **DEC Elettronica**, we will further enhance our services and products in the field of **mechatronics** by combining **electronics expertise with mechanical and plastic knowledge** to create integrated and high-quality solutions and products.


AREAS OF SPECIALIZATION:
mechanics, plastics, electronics.



zetronic group




+300 COLLABORATORS



TURNOVER: €43M



**AUTOMOTIVE, INDUSTRY
AUTOMATION, FOOD
INDUSTRY AUTOMATION,
HVAC, MEDICAL, METERING**




**AUTOMOTIVE COMPONENTS
DESIGN & MANUFACTURING**

DEC Elettronica & dedicated Innovatek services fall under the responsibility of **Zetronic**

DEC elettronica is the company of the group specialized in the electronics sector. Innovatek is specialized in advanced LABOUR-intensive services



**ELECTRONIC DESIGN &
MANUFACTURING SERVICES**



**ADVANCED LABOUR INTENSIVE
SERVICES**



zetronic

CONSOLIDATE, CONFIRM, PROGRESS IN AUTOMOTIVE SECTOR



Seat belt pretensioner
 ECU electronic emission
 Gestor control roof module
 Engine control module
 Dual clutch actuator
 Battery/Electronic connectors
... and many others

zetronic group

MECHATRONICS

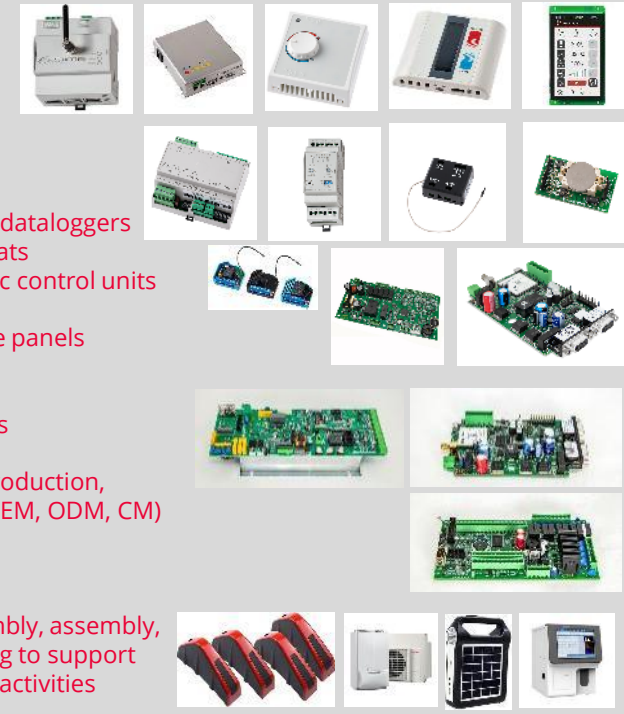
- MECHANICS -
- PLASTICS -
- ELECTRONICS -

Access through **molex** to framework supply agreements for **plastics, metals, and electronics.**



target markets
 AUTOMOTIVE,
 INDUSTRY, FOOD INDUSTRY
 AUTOMATION, HVAC,
 MEDICAL, METERING

target markets
 ADVANCED LABOUR
 INTENSIVE
 FOR MECHATRONICS



Industrial dataloggers
 Thermostats
 Parametric control units
 Sensors
 Interactive panels
 Controls
 Add-ons
 Extensions

Design, Production,
 Testing (OEM, ODM, CM)

Pre-assembly, assembly,
 and testing to support
 industrial activities

and more...

POSSIBLE NEW SYNERGIES

Expertise and certified experience in the electronics field open up potential new development and integration opportunities.

INDUSTRIAL CAPACITY

Zetronic Group, with its **28,000 square meters** of facilities, **+300 people**, offers industrial design and production in the mechatronics sector.

From certified product&lines design services to automated mass production, from the development of electronic solutions to advanced assembly activities, **Zetronic Group adapts to customer needs, prioritizing quality, efficiency, and optimization.**

DESIGN TEAM



25 mechanical plastics design



20 electronics design



4 process engineers

FOR A TOTAL OF OVER 7,000 HOURS OF DESIGN WORK PER MONTH.

PLANTS TO MANAGE +500K Hours/Year

- Certified Industrial Production
- High-Automation Plants and Lines (mechatronics/electronics)
- Dedicated LABOUR-Intensive Lines (mechatronics/electronics)
- Third-Party Logistics Services

80 PEOPLE IN THE ELECTRONICS SECTOR

120 SPECIALISTS IN MECHANICS FOR PLASTICS

100 PEOPLE IN THE LABOUR-INTENSIVE SECTOR

zetronic group



PADOVA - 18.000 SQM - MECCATRONIC



CHIARANO (TV) - 2.000 SQM - ELECTRONICS



LONGARONE (BL) - 12.000 SQM - LABOUR INTENSIVE

CORPORATE OBJECTIVE

To **consolidate our long-standing production in the automotive sector** (mechanics, plastics sector) and become the reference partner for major international groups, offering "third-party" solutions through a **complete supply chain that supports industrial players.**

We aim to grow in the automotive sector with a strong focus on industrialization and research & development (R&D), while also integrating the services offered by other companies within the group in the **electronics sector.**

Services offered

- Design
- Industrialization
- Production
- After-sales

Operational approach

- OEM (Original Equipment Manufacturer)
- ODM (Original Design Manufacturer)
- CM (Contract Manufacturer)

KEYWORDS



Human capital, organization, trust, safety



Intellectual capital and technologies



Control and planning



Direct relationship with the client, in line with their needs

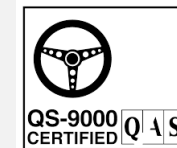


Control and management of financial and physical capital



Green-oriented approach

zetronic



(1998)



(1993)



(2018)



(2006)



(2012)



(2006)



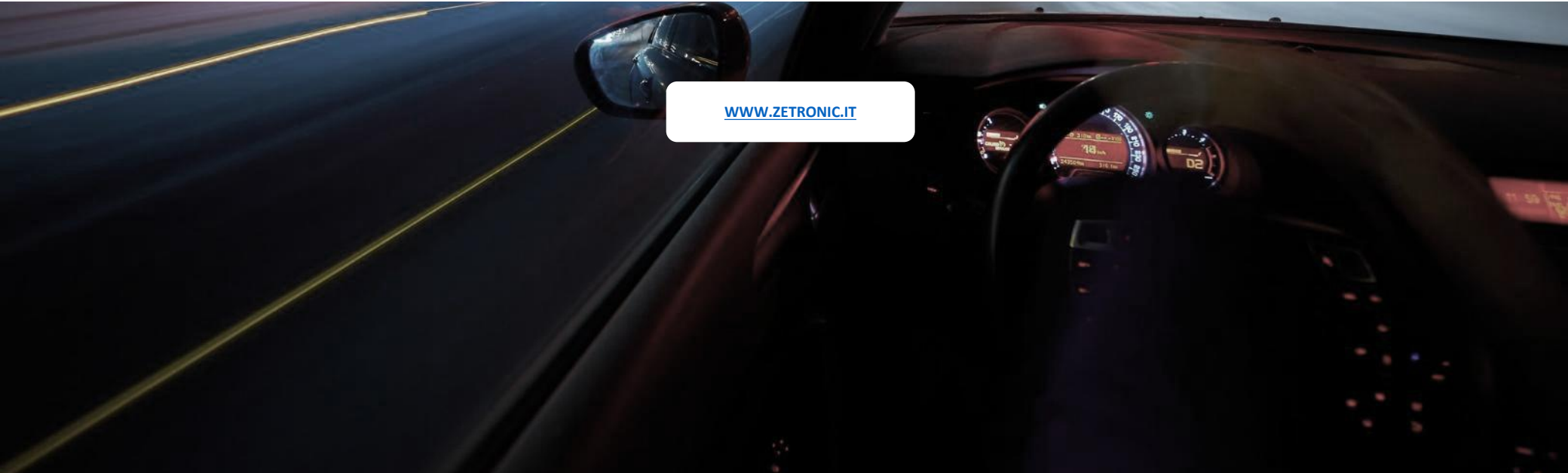
(2004)



(2019)

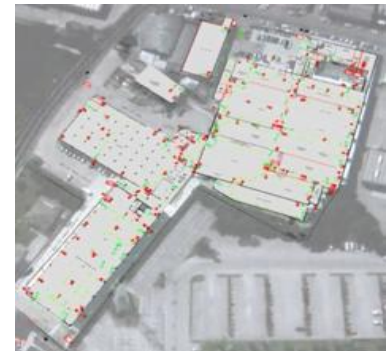
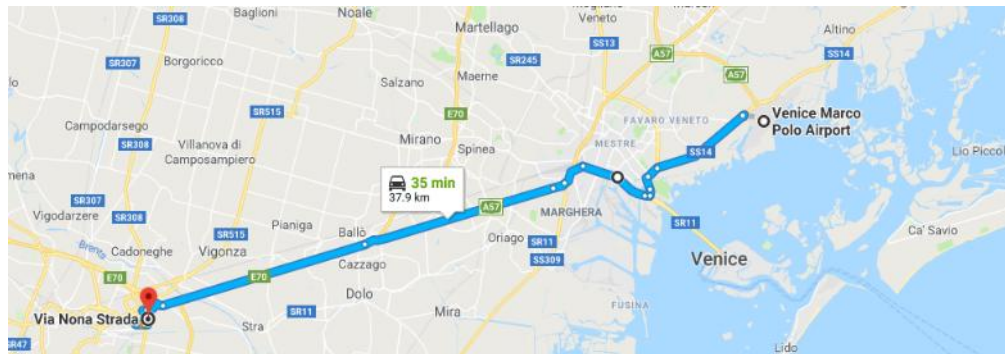


zetric



WWW.ZETRONIC.IT

MANUFACTURING PLANT LOCATION



KEY TECHNOLOGIES

MOLDING

- High number of cavities

OVER/INSERT-MOLDING

- High automation for frames and terminals

STAMPING

- Pins – Tabs – LeadFrame – EON Press-Fit

PLATING

- Tin/Nickel
- Nickel/Silver
- Nickel phosphorus (wire bonding areas)

ASSEMBLY

- Single Stitching
- Gang
- Pins and Tabs

ELECTRONICS & COMPONENTS INTEGRATION

- SMT
- IDT
- Electric welding

INSPECTION

- Sealing
- Testing
- Camera check
- HiPot
- Scanners

PACKAGING

- Dry-pack packaging with vacuum
- Disposable and returnable solutions

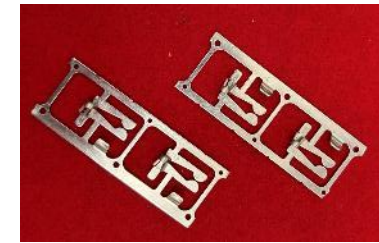
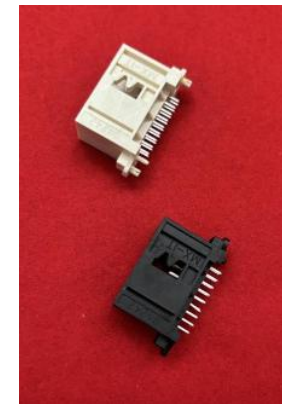
PRODUCTS EXAMPLES

- Overmolded leadframes
- Insertmolded leadframes w/Electronic components
- Stitched Capacity holder
- Wire-bondable coated surfaces
- Overmolded Stator cage
- Insert-molded headers
- Assembled battery connectors
- Vertical stitched headers
- MOX, RAST industry interfaces
- Thru-hole, pin-in-paste, SMT, terminations for PCB mounting
- RAST female housings (receptacles)
- Ring Terminals



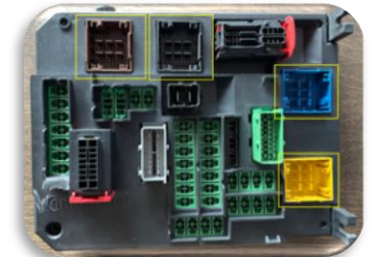
PRODUCTS EXAMPLES

- Vertical stitched or insert-molded headers
- R/A stitched headers
- Over-molded lead-frames w/o Electronic components
- Gearboxes with Electronic components
- MOX, CMC, USB industry interfaces
- Press-fit, thru-hole, pin-in-paste, SMT, terminations for PCB mounting
- IDT
- LSR sealing
- VBS terminals



THE AUTOMOTIVE CAPABILITIES

- Roof Module Gesture Control
- Clutch Actuator
- Window Lifter
- Inside Injectors Pressure sensing
- Engine Control Unit
- Dashboard Control Panel
- Vehicle Control Unit



QUALITY STANDARDS

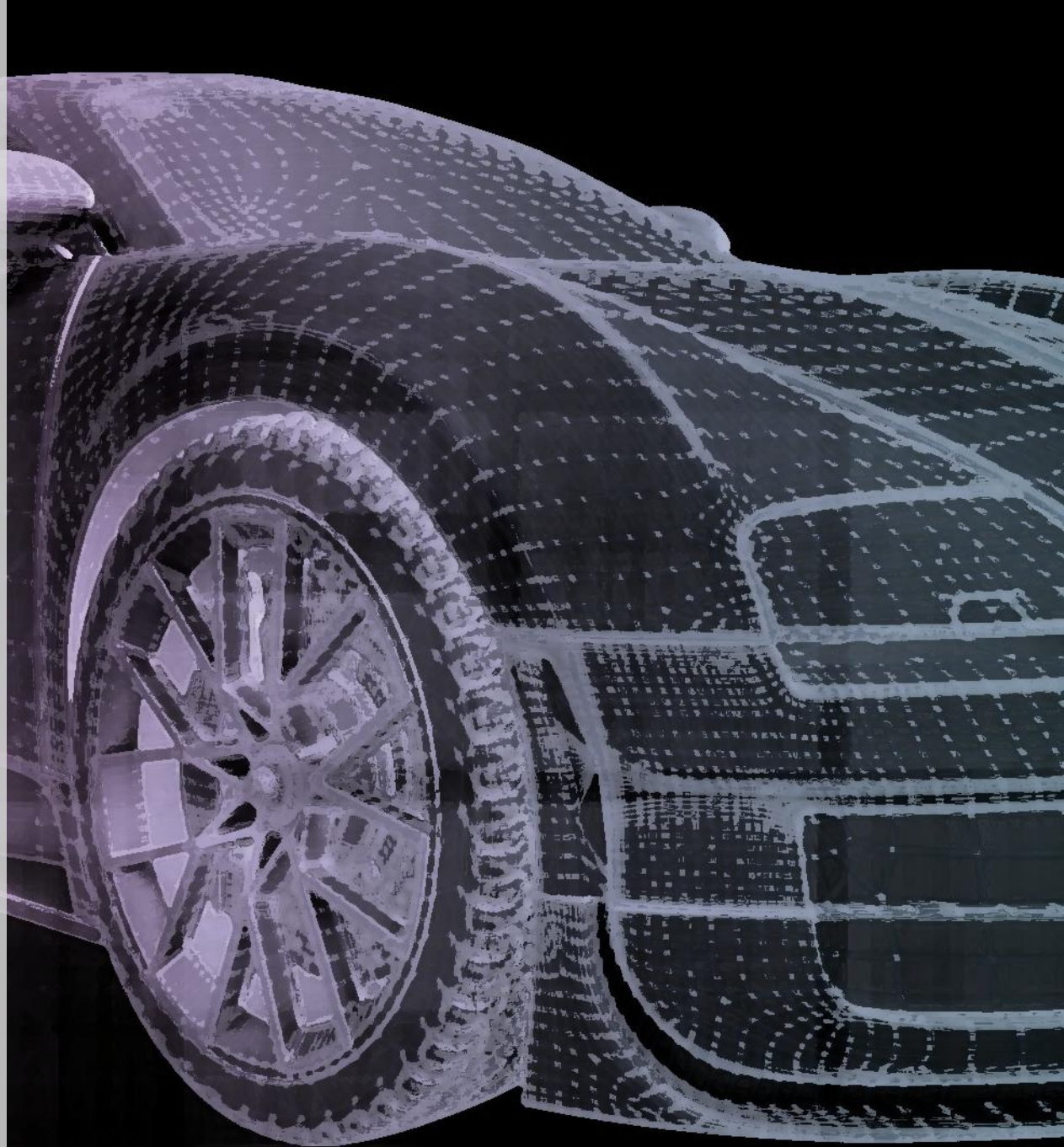
QUALITY MANAGEMENT SYSTEM ORGANIZATION CERTIFIED AT EARLY STAGES:

- ISO 9001 (1st in 1993)
- QS 9000 (1st in 1998)
- ISO 14001 (1st in 2006)
- ISO/TS 16949 (1st in 2012)
- ISO 18001 (1st in 2013)
- IATF (1st in 2018)
- ISO 45001 (1st in 2019)



PLANT CAPABILITIES

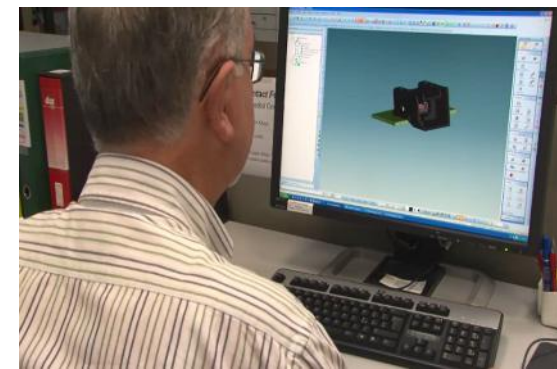
- DESIGN CAPABILITIES
- PRODUCT & PROCESS DEVELOPMENT
- RELIABILITY LAB
- MOLDING
- STAMPING
- PLATING
- ASSEMBLY
- INSPECTION & TESTING



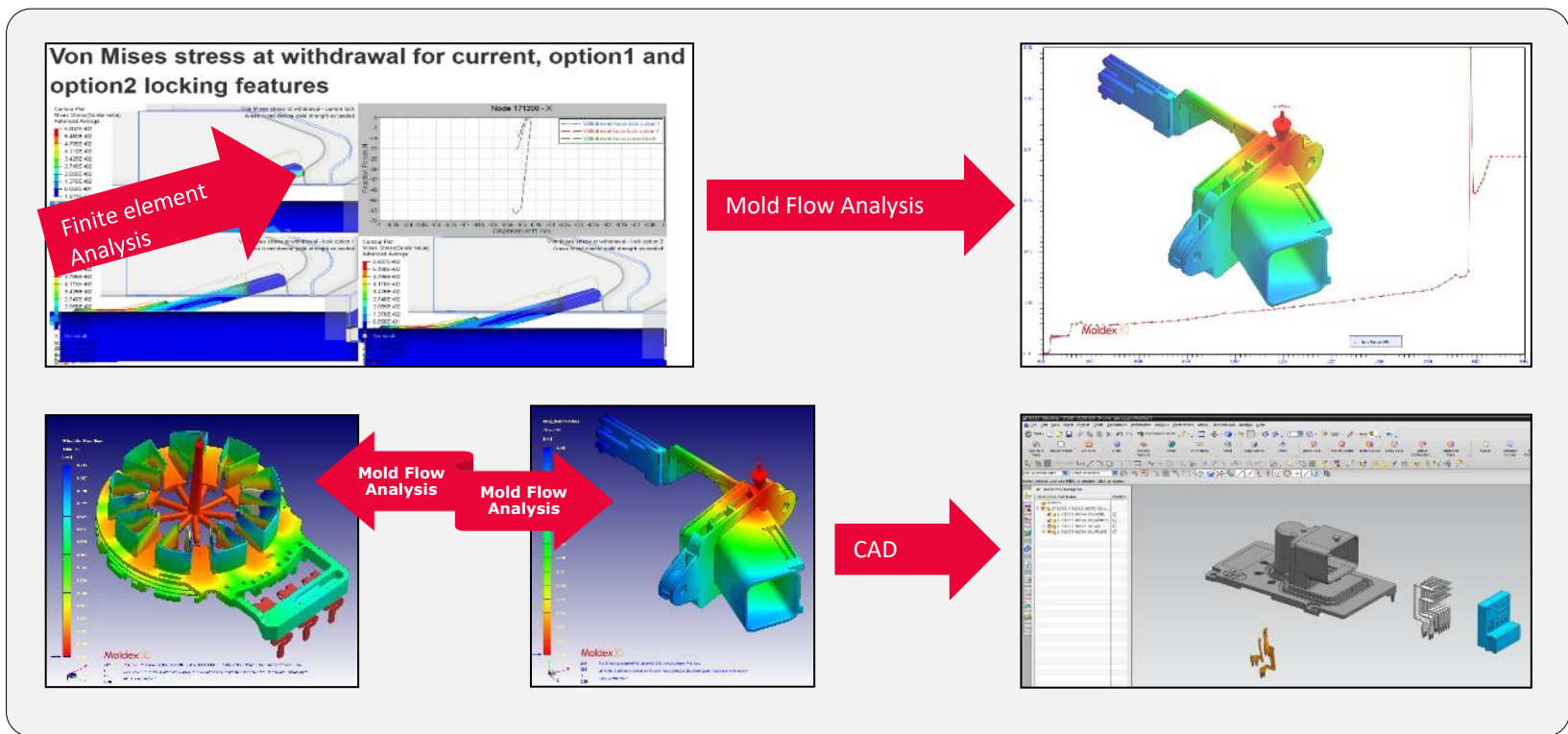
DESIGN CAPABILITIES & PRODUCT DEVELOPMENT

Product Development capabilities for new connectors

- CAD (design)
- CAE (predictive)
- Co-design “custom” studies
- Economic thinking approach
- Engineering verification
- Design validation
- Prototyping
- Production validation



25 mechanical plastics design ; 20 electronics design ; 4 process engineers



THE LAB MISSION

- To provide our customers with product reliability assessments from the prototyping to the PPAP phase;
- To provide assistance to the Design Engineering group in evaluating customer requirements as far as product performance and reliability are concerned;
- To provide field performance/failure analysis related to contact physics and other non-quality issues;
- To provide assistance to Quality Assurance and Production Departments for gauge creation and metrology activity;
- To cooperate with external testing facilities in case of special tests needed.



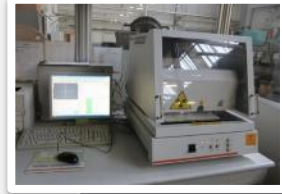
Electrical Tests

- Low Level Contact Resistance
- Dry Circuit Resistance
- Voltage Drop Testing
- Isolation Resistance
- Current Carrying Capacity
- Maximum Test Current Cycling
- Fretting Corrosion
- Dielectric Strength Testing



Environmental Tests

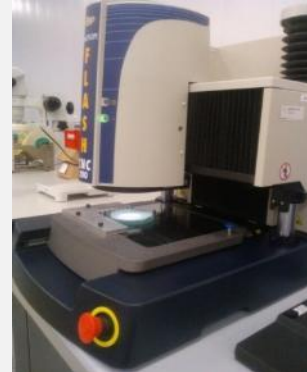
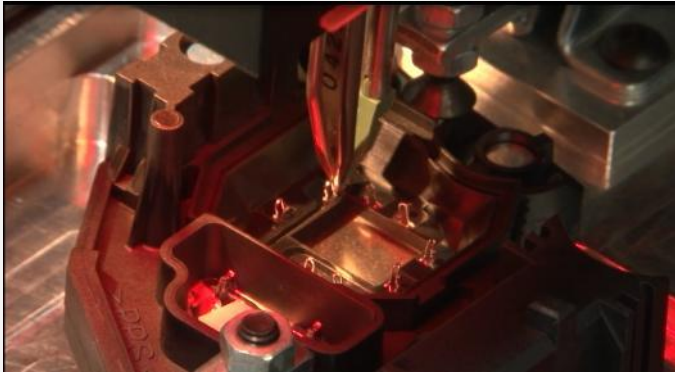
- Thermal Shock
- Moisture Resistance
- Temperature Cycling
- High Temperature Exposure
- Low Temperature Exposure
- Package Drop Test
- Salt Spray
- SMT Reflow Test



Mechanical Tests

- Engage/Disengage Force
- Mating/Un-mating
- Insertion/Extraction Force
- Polarization Feature Effectiveness
- Torque Testing
- Retention Force
- Mechanical Strength
- Solder ability
- Crimping Test

LAB MODULES



MANUFACTURING CAPABILITIES

TOOLING

Tooling Development capabilities

- CAD (design) & CAM (machinery)
- Punches, dies, inserts
- Wire and Plunge EDM
- Milling and grinding machines
- Milling machines
- EDM Wire Machines
- EDM Erosion Machines
- Ultrasonic cleaning
- Laser welding
- Grinding Machines
- Preventive maintenance



MANUFACTURING CAPABILITIES

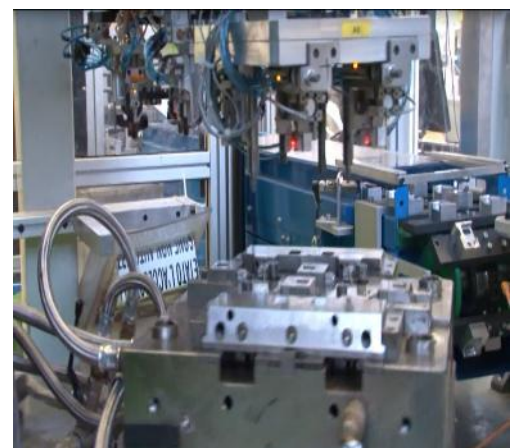
MOLDING

From granulate to molded housings

- Centralized pipeline
- Molding die (2 to 16 cavities)
- Polymers PBT, PA, PPA, LCP, PPS
- Horizontal press machine (45t to 350t)
- Vertical press machine (35t to 80t)
- Insert-molding
- Automatic packaging
- In-line inspection

TONNAGE	VERTICAL	HORIZONTAL
35T	1	
45T	1	
50T		3
60T	1	7
80T	1	1
100T		2
150T		2
160T		2
210T		1
250T		2
350T		1

TOTAL = 25 Molding Presses



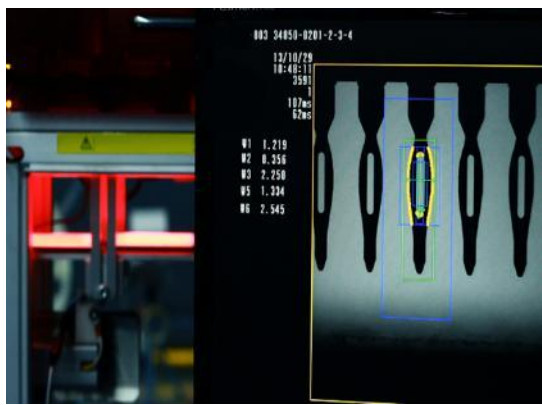
MANUFACTURING CAPABILITIES

STAMPING

From coils to strip of terminals

- Automatic de-reeling
- Stamping die (1 to 3 ups)
- Transforming Cu alloys
- Press machine (25t to 50t)
- Automatic reeling
- In-line camera inspection

Tonnage	Quantity
25T	4
30T	1
40T	1
45T	1
50T	1
100T	1
TOTAL	9

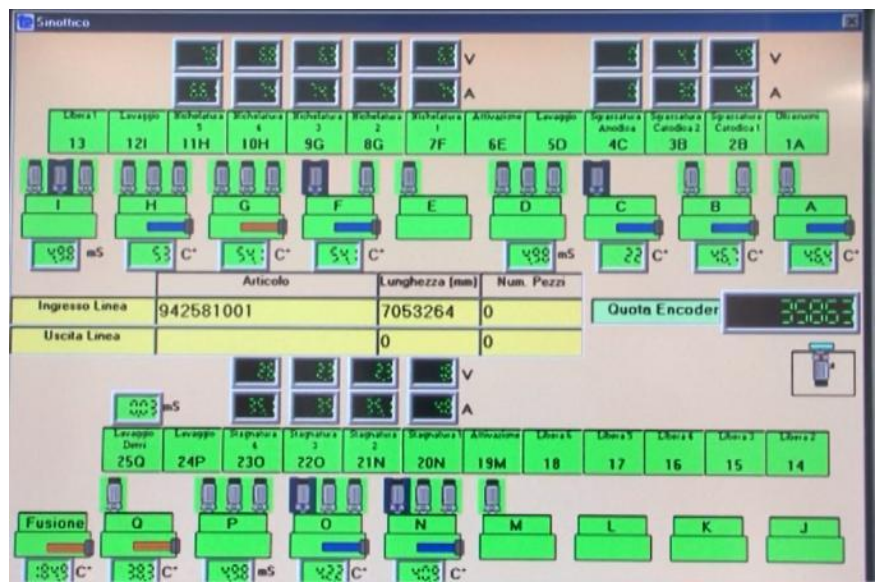


MANUFACTURING CAPABILITIES

PLATING

4 PLATING LINES

- Nickel
 - Silver
 - Tin
 - Tin Reflow
 - Nickel phosphorus
- ✓ Automatic de-reeling
 - ✓ Full or selective coating
 - ✓ Reel-to-reel plating lines
 - ✓ Inductive reflow
 - ✓ Automatic reeling
 - ✓ In-line inspection

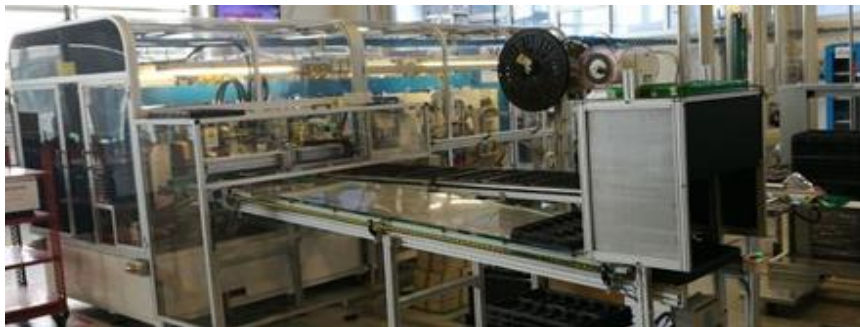
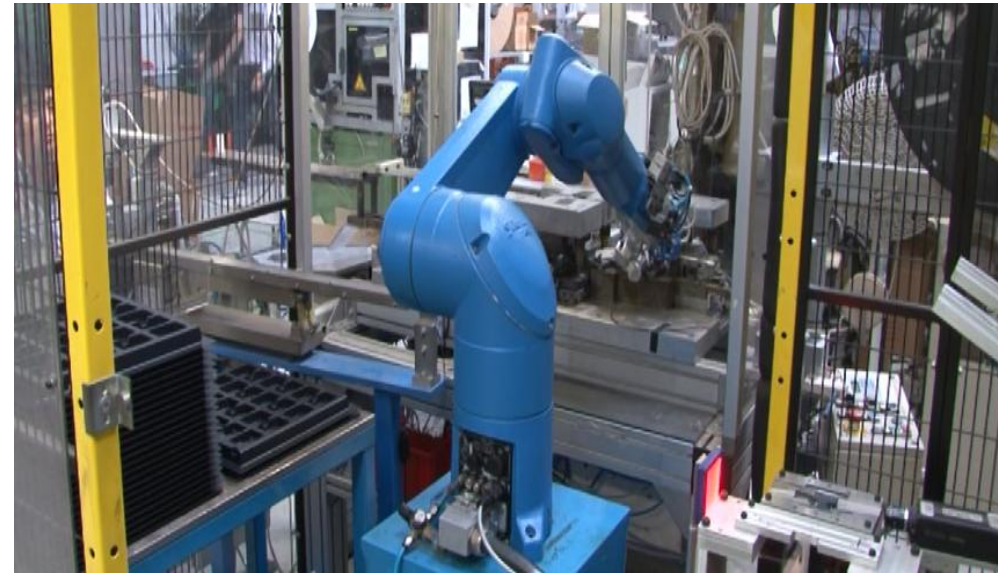


MANUFACTURING CAPABILITIES

ASSEMBLY

From components to finished goods

- Automatic and semi-automatic machines
- Automatic gang and stitching
- Automatic terminal form and packaging
- Automatic Inspection with high speed camera
- Robot application
- Ultrasonic welding
- SMT process capability
- High speed stitching

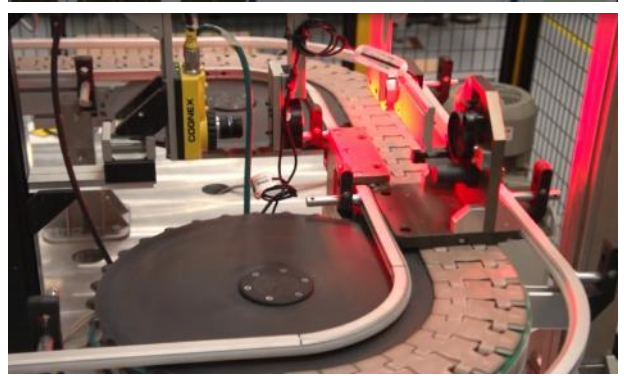
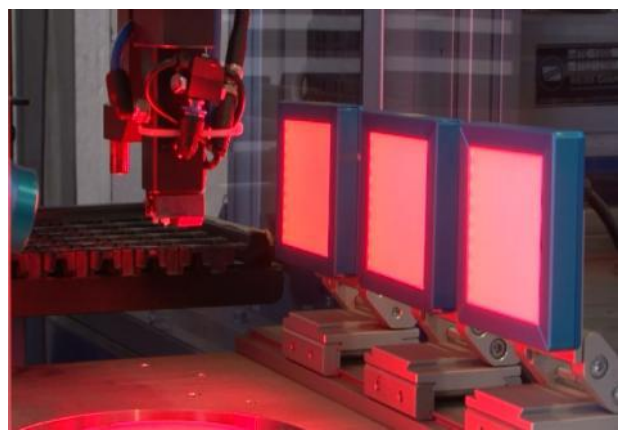
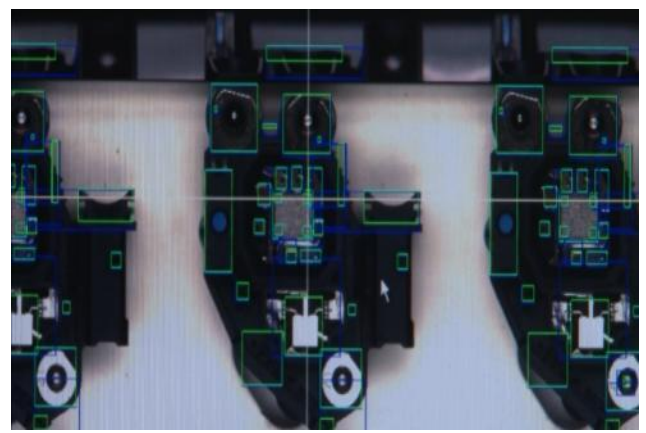


MANUFACTURING CAPABILITIES

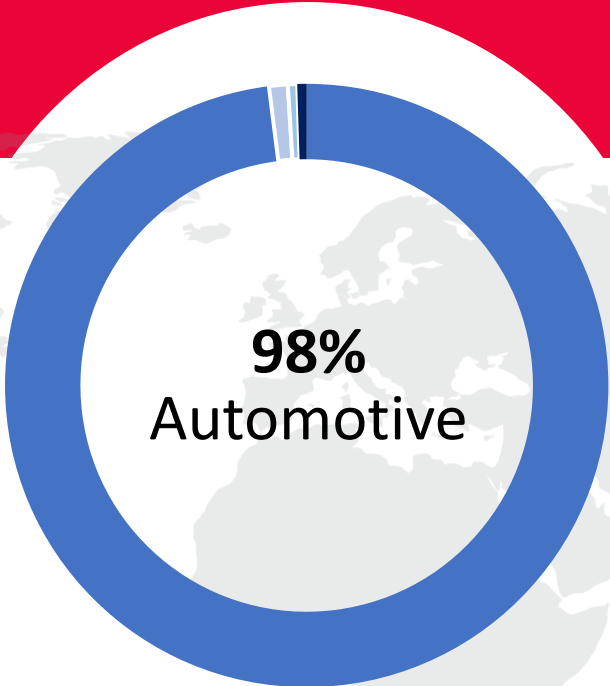
INSPECTION & TEST

From an output to a certified output

- Automatic feeder
- In-line camera inspection
- In-line electrical testing
- In-line scanner
- Wire bonding
- Pull& Shear testing

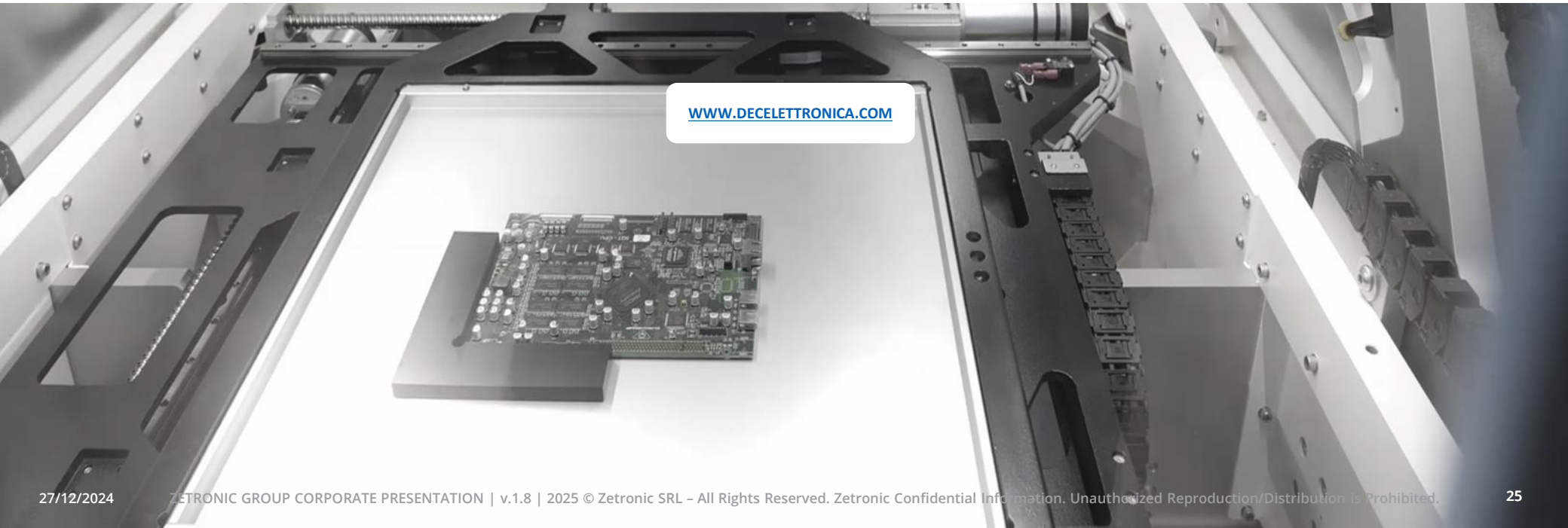
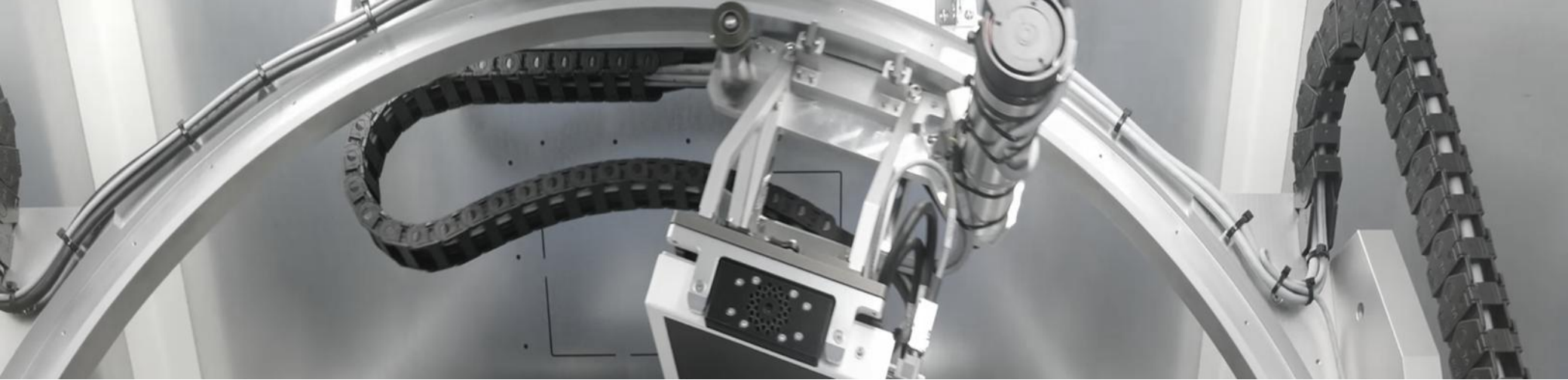


MARKETS SHARE



Markets by revenue

- AUTOMOTIVE (98%)
- CONSUMER (1%)
- INDUSTRIAL (0,5%)
- OTHER (0,5%)

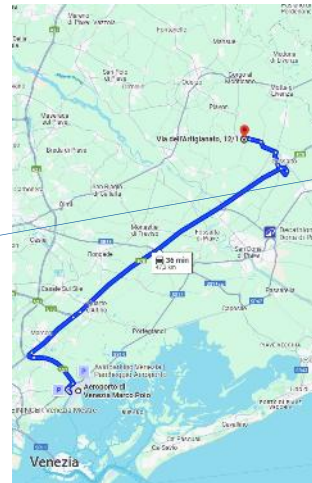


DEC elettronica holds the design authority for the electronics sector and operates in Electronic Manufacturing Services (EMS) field.

DEC elettronica stands out in the market for its competitiveness and versatility, overseeing the entire value chain from design to production and testing.



Production Plant in
Via dell'Artigianato, 12/131040 - Fossalta Maggiore di Chiarano (TV) - Italy



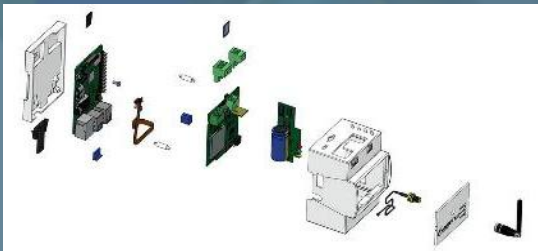
+80 people, since 1986

- DEC Elettronica has been present in the market for **over 30 years**.
- DEC Elettronica has successfully served **over 50 clients**.
- DEC Elettronica has produced **more than 4 million electronic boards in the last 5 years**.

TARGET MARKETS

- AUTOMOTIVE
- INDUSTRY
- FOOD INDUSTRY
- AUTOMATION
- HVAC (Heating, Ventilation, and Air Conditioning)
- MEDICAL
- METERING

CIRCUIT BOARD DESIGN & CO-DESIGN



We design the hardware, firmware and software, in addition to engineering and industrializing the products.

- Feasibility study
- Analyzing the applicable standards and regulations
- Defining the specifications and activities
- Product industrialization
- Mechanical chassis development
- Hardware, Firmware, Software development
- Component selection
- Drafting technical documentation
- Prototyping
- Support for certifications and approvals
- Support for mass production

EMS PRODUCTION



The boards are produced through two fully automated SMD component assembly lines. We apply rigorous inspections and automated tests.

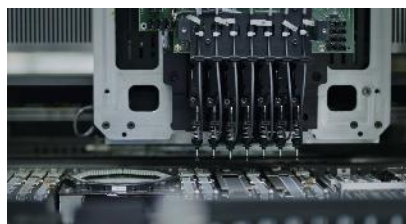
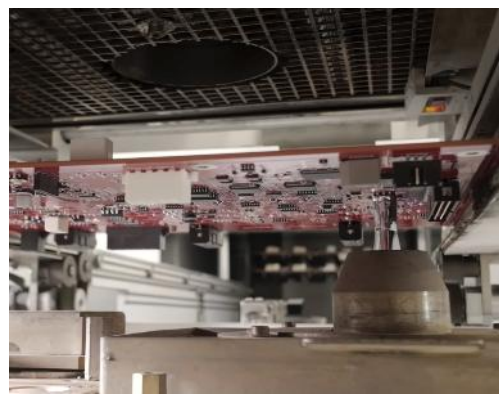
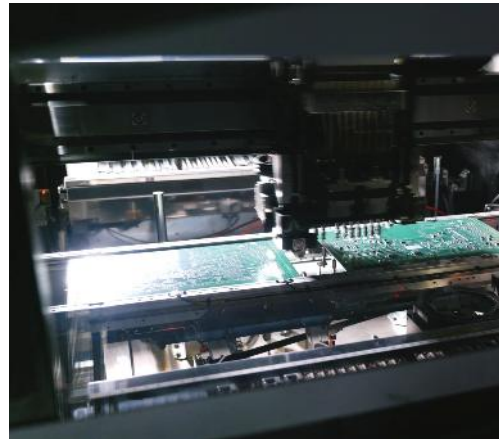
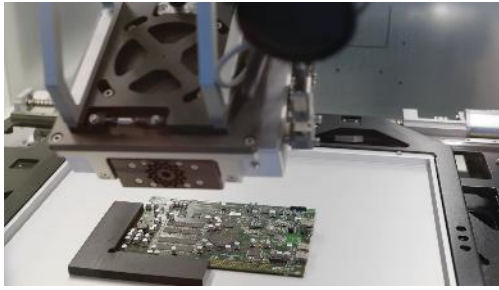
- Product traceability
- Material preparation
- Screen printing solder paste on boards
- SMT assembly
- Reflow soldering
- Visual inspection of SMD components
- PTH assembly
- Wave soldering
- PTH finishing and check
- In-circuit programming test
- Finished product assembly



MANUFACTURING CAPABILITIES

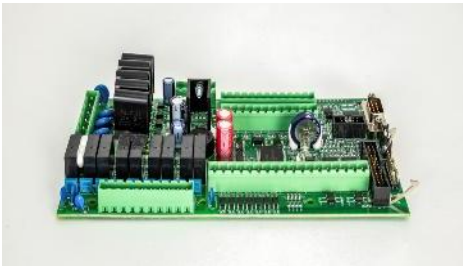
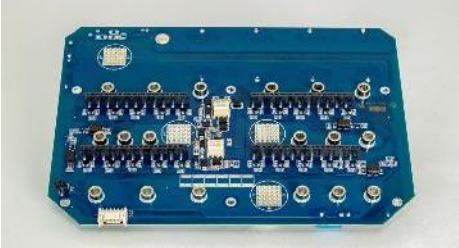
SMT PRODUCTION

- 4 SMD Lines
- 1 SMD line dedicated to prototypes and pre-production
- Coating & Resins Department
- 2 PTH Assembly Line
- 1 Quality Control Area, 2 Quality Certifications with IPC-A-610 quality standard: AOI, X-Ray, Batch Traceability quality controls
- Automated vertical storage system



PRODUCTS EXAMPLES: ELECTRONIC BOARDS

The electronic boards we produce are used in complete products, developed in engineering/co-engineering or manufactured to customer specifications, ensuring high quality, precision, and reliability for the most demanding sectors.



Main applications in:

- AUTOMOTIVE
- INDUSTRY
- FOOD INDUSTRY AUTOMATION

PRODUCTS EXAMPLES

- HMI Touch Screen, Touch Interfaces and Interactive Panels
- 7 Segments LV Touch Interfaces
- Display Interface
- Ghibli Base Control
- Relay Expansions and Expansion
- Three-phase controls with MTL Thermocouple
- Titan controls and Add-Ons
- Radio controls, CT Interfaces, AR Timing Selector
- Parametric Control Units and Sensors
- Thermostats
- Z-WAVE smart home modules
- Industrial Data Loggers
- ... and more





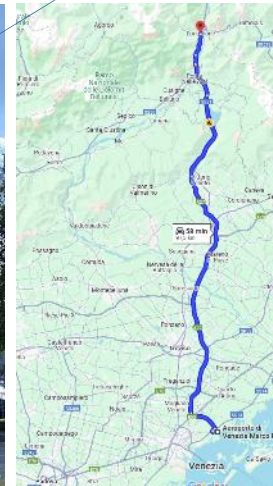
Innovatek is an **industrial service platform** of excellence in **advanced manufacturing**.

Innovatek offers a **range of services, solutions,** and **complete products** in the mechatronics sector.

Innovatek stands out for its expertise, flexibility, quality, and competitive pricing, with a fully customer-oriented approach, from engineering to production and testing of equipment.



Production Plant in
Zona Industriale Villanova, 17/A, 32013 - Longarone (BL) - Italy



+100 people
+ 200,000 hours/year of
production capacity

TARGET MARKETS

LABOUR INTENSIVE IN
MECHATRONICS, ELECTRONIC
AND MECHANIC FIELDS

MANUFACTURING CAPABILITIES

+100 people
+ 200,000 hours/year of production capacity

LINES & AREAS

- Climate-controlled spaces with dedicated lines for clients.
- Investment capacity in terms of facilities, specific technologies, and dedicated training.
- Functional testing with dedicated testing stations.
- In-circuit testing of electronic equipment in compliance with IPC-A-610 standards.



zetronic group

zetronic srl

Zona Industriale Nona Strada, 29, 35129 Padova PD

VAT N. 00801060286

TEL. +39 049 791 2200

EMAIL: info@zetronic.it

www.zetronic.it